

1 EX./NEW EXTERIOR  
A9 WALL DETAIL-1 HR  
SCALE: 1" = 1'-0"

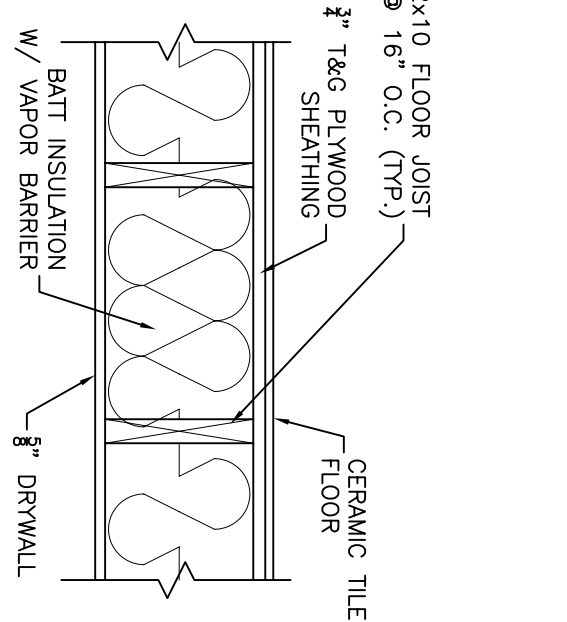
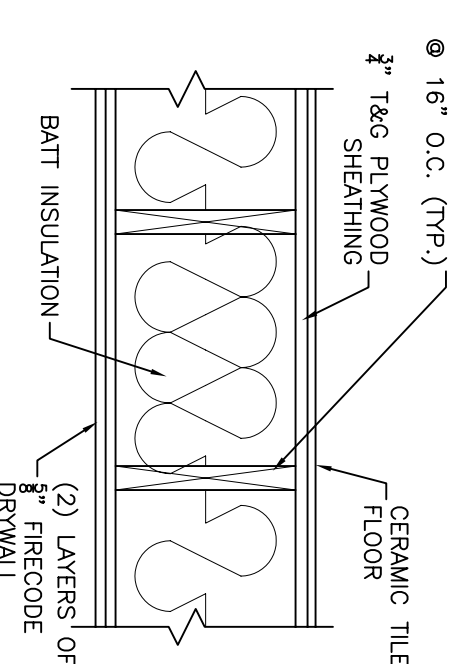
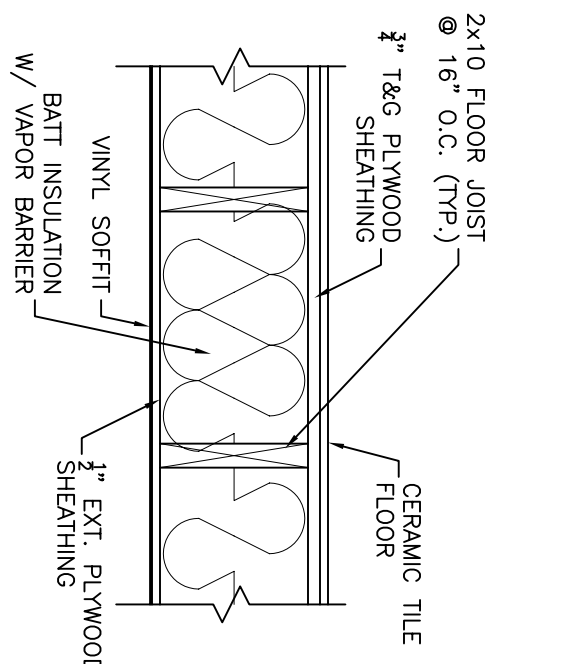
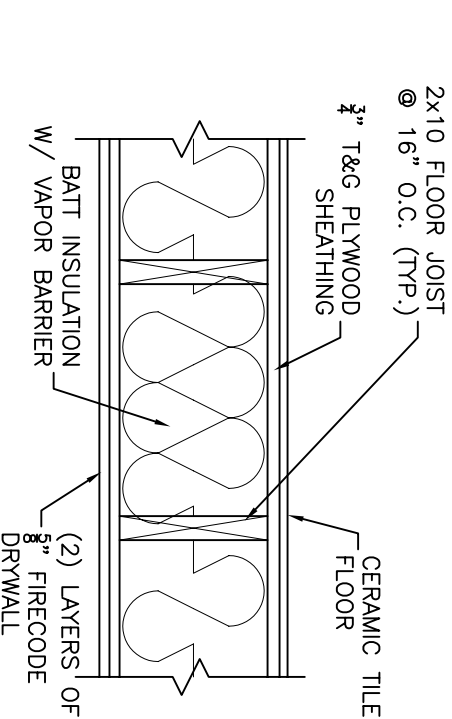
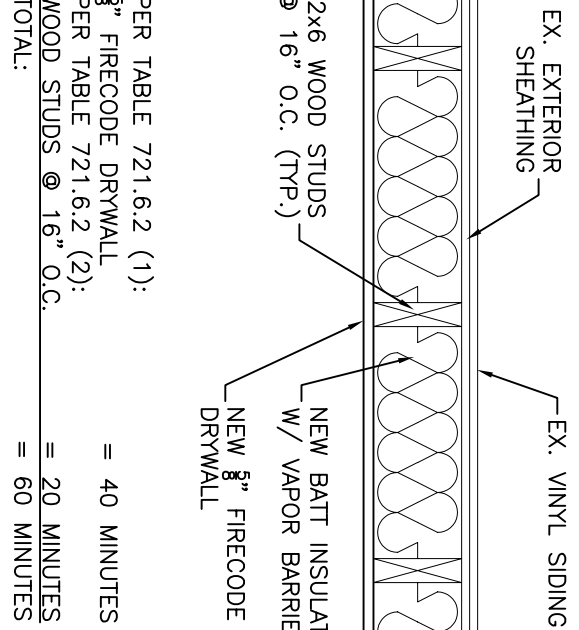
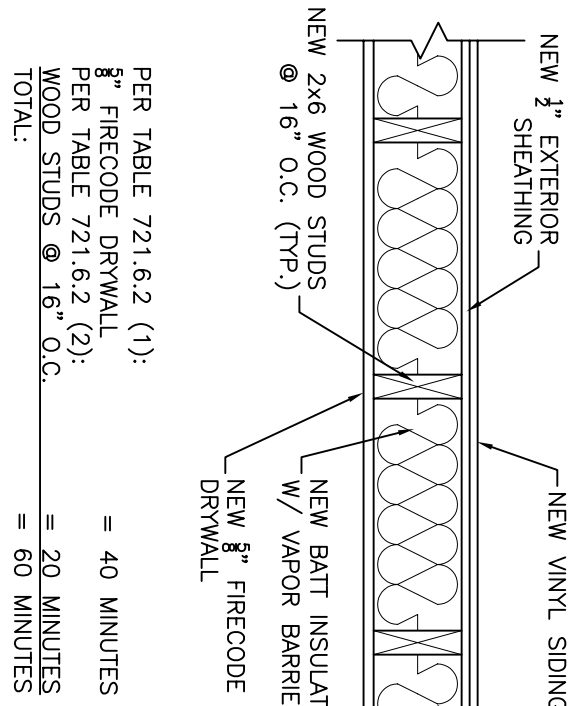
2 EX./NEW EXTERIOR  
A9 WALL DETAIL-1 HR  
SCALE: 1" = 1'-0"

3 EX./NEW EXTERIOR  
A9 WALL DETAIL-1 HR  
SCALE: 1" = 1'-0"

4 EX./NEW EXTERIOR  
A9 WALL DETAIL-1 HR  
SCALE: 1" = 1'-0"

5 EX. EXTERIOR  
A9 WALL DETAIL-1 HR  
SCALE: 1" = 1'-0"

6 NEW EXTERIOR  
A9 WALL DETAIL-1 HR  
SCALE: 1" = 1'-0"



7 NEW EXTERIOR  
A9 WALL DETAIL-1 HR  
SCALE: 1" = 1'-0"

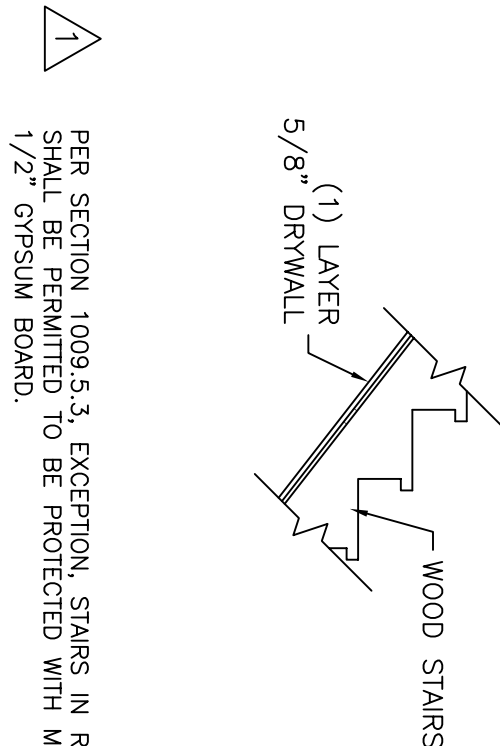
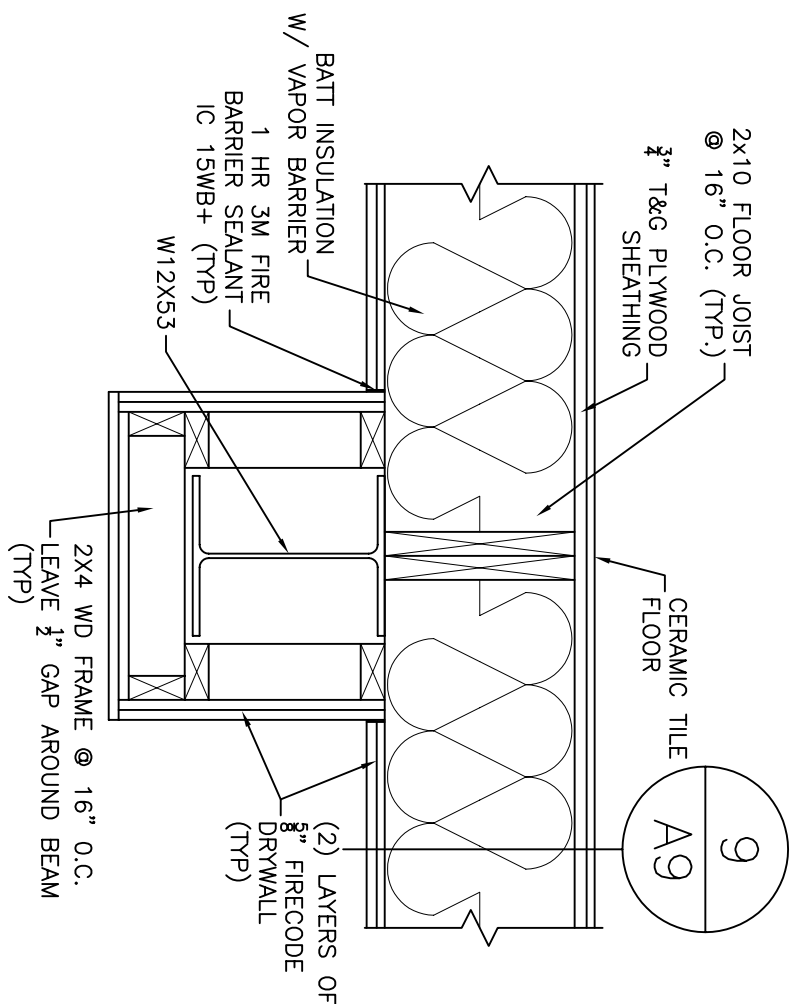
8 EX./NEW EXTERIOR  
A9 WALL DETAIL-1 HR  
SCALE: 1" = 1'-0"

9 FLR/CLG DETAIL-1 HR  
A9 SCALE: 1" = 1'-0"

10 FLR/CLG DETAIL  
A9 SCALE: 1" = 1'-0"

11 FLR/CLG DETAIL-1 HR  
A9 SCALE: 1" = 1'-0"

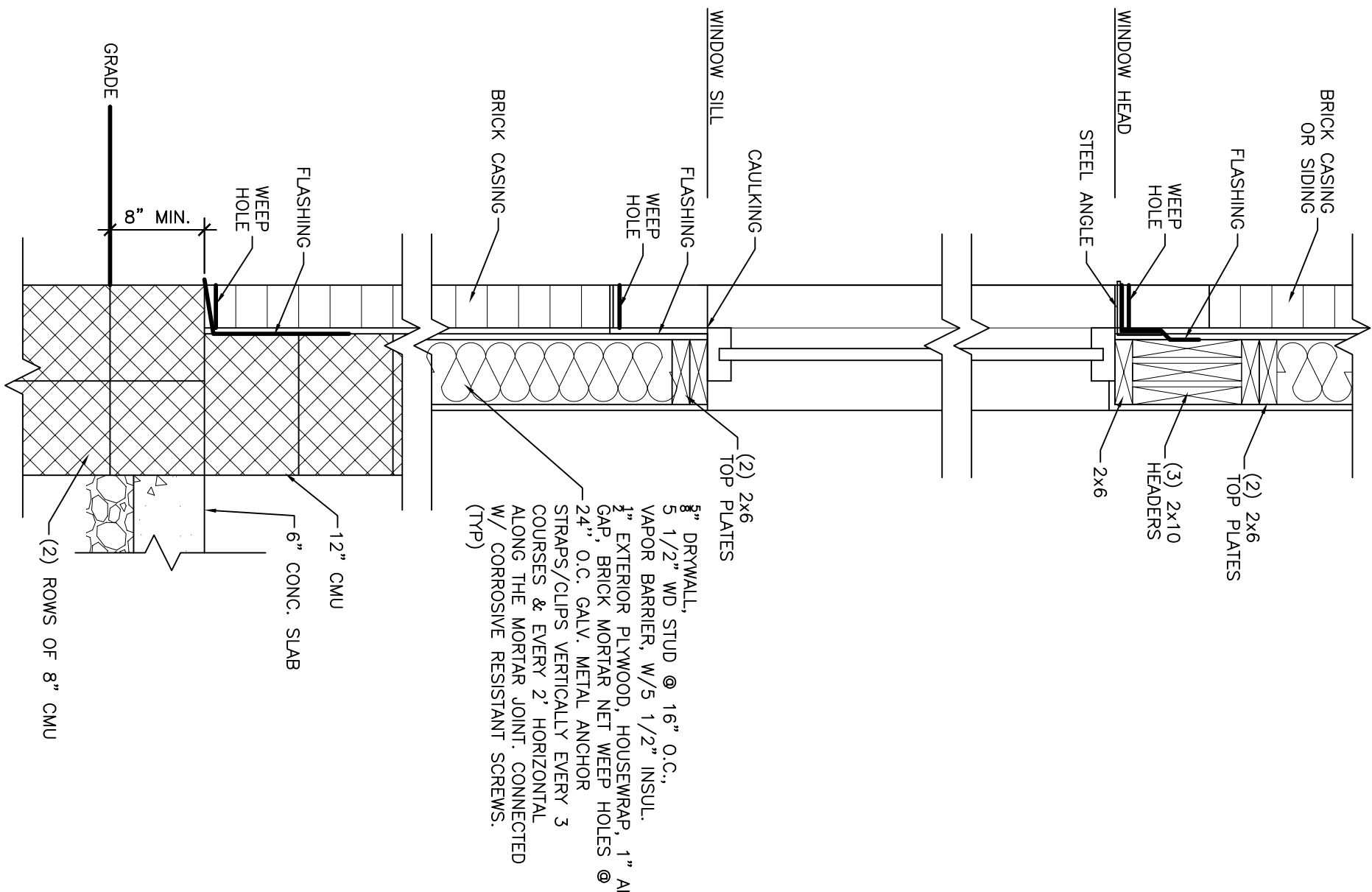
12 FLR/CLG DETAIL  
A9 SCALE: 1" = 1'-0"



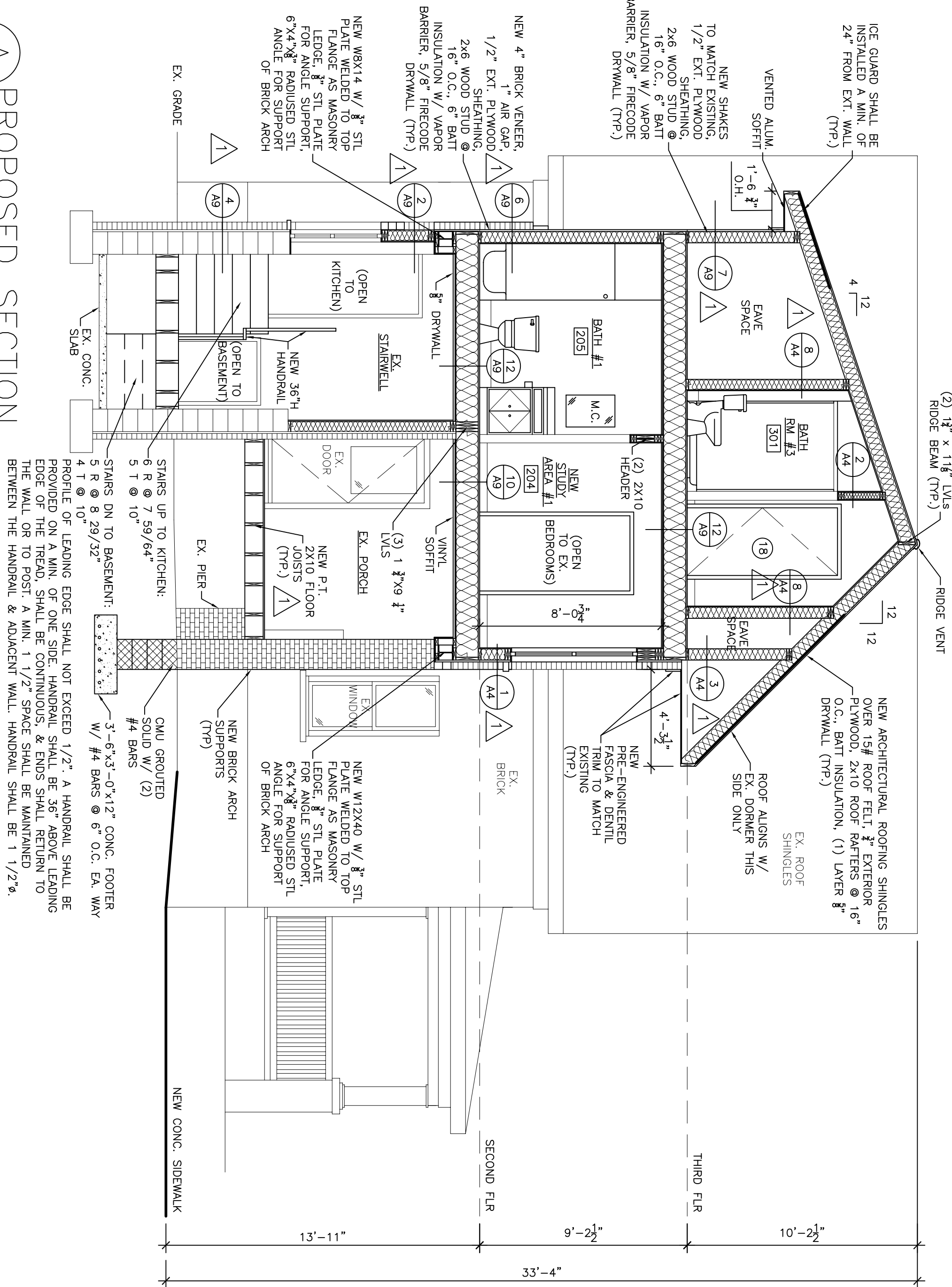
BEAM BOX:  
BASE LAYER: 5/8" FIRECODE DRYWALL APPLIED TO 2X4 FRAMING W/  
FLOOR JOISTS @ 16" O.C. (TYP.)  
FACE LAYER: 5/8" FIRECODE DRYWALL APPLIED TO 2X4 FRAMING W/  
1 5/8" TYPE 5 DRYWALL SCREWS 12" O.C.  
-PER IBC SECTION 714.2.1, BEAMS SHALL BE PROTECTED ON ALL  
SIDES WITH MATERIALS HAVING THE REQUIRED FIRE-RESISTANCE RATING.  
-BASED ON TABLE 721.6.2(1), OF IBC 2006, (2) LAYERS OF 5/8"  
FIRECODE DRYWALL WILL PROVIDE 80 MINS. OF FIRE RESISTANCE.  
THEREBY MEETING THE 60 MIN. REQUIREMENT.

13 BOXED BEAM DETAIL-1 HR  
A9 SCALE: 1" = 1'-0"

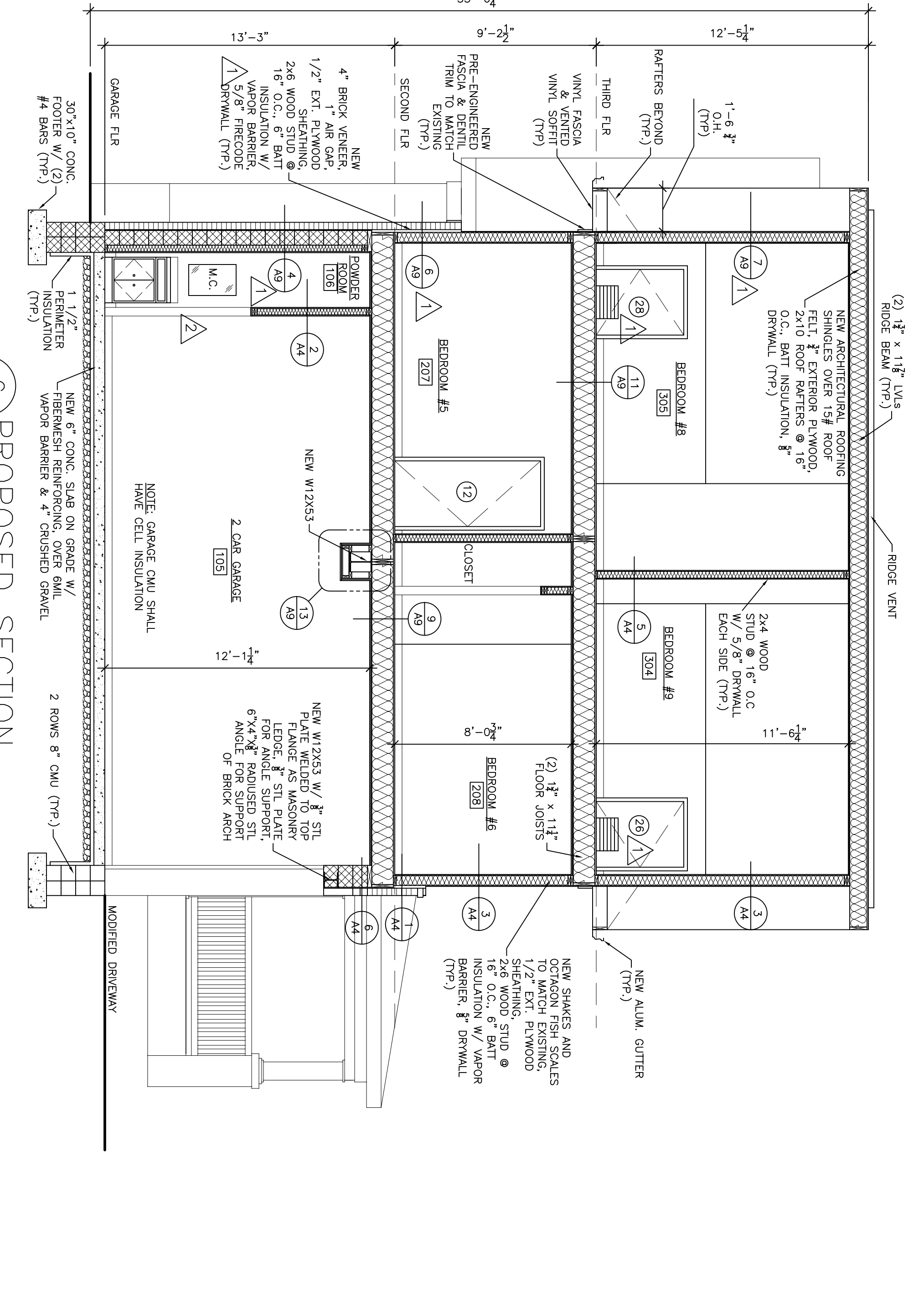
14 NEW UNDER STAIR DETAIL  
A9 SCALE: N.T.S.



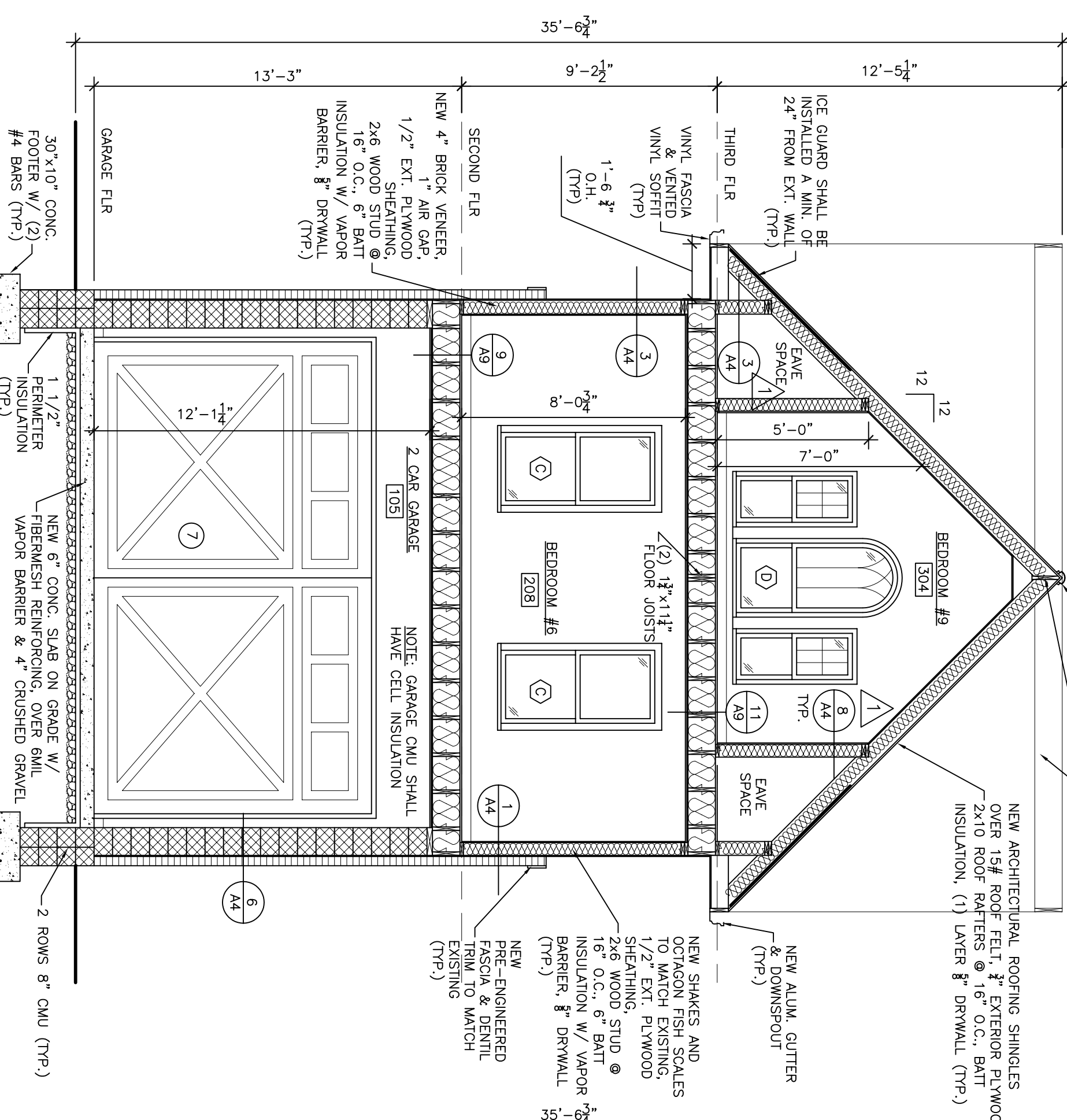
WINDOW & FLOOR FLASHING  
SCALE: 1" = 1'-0"



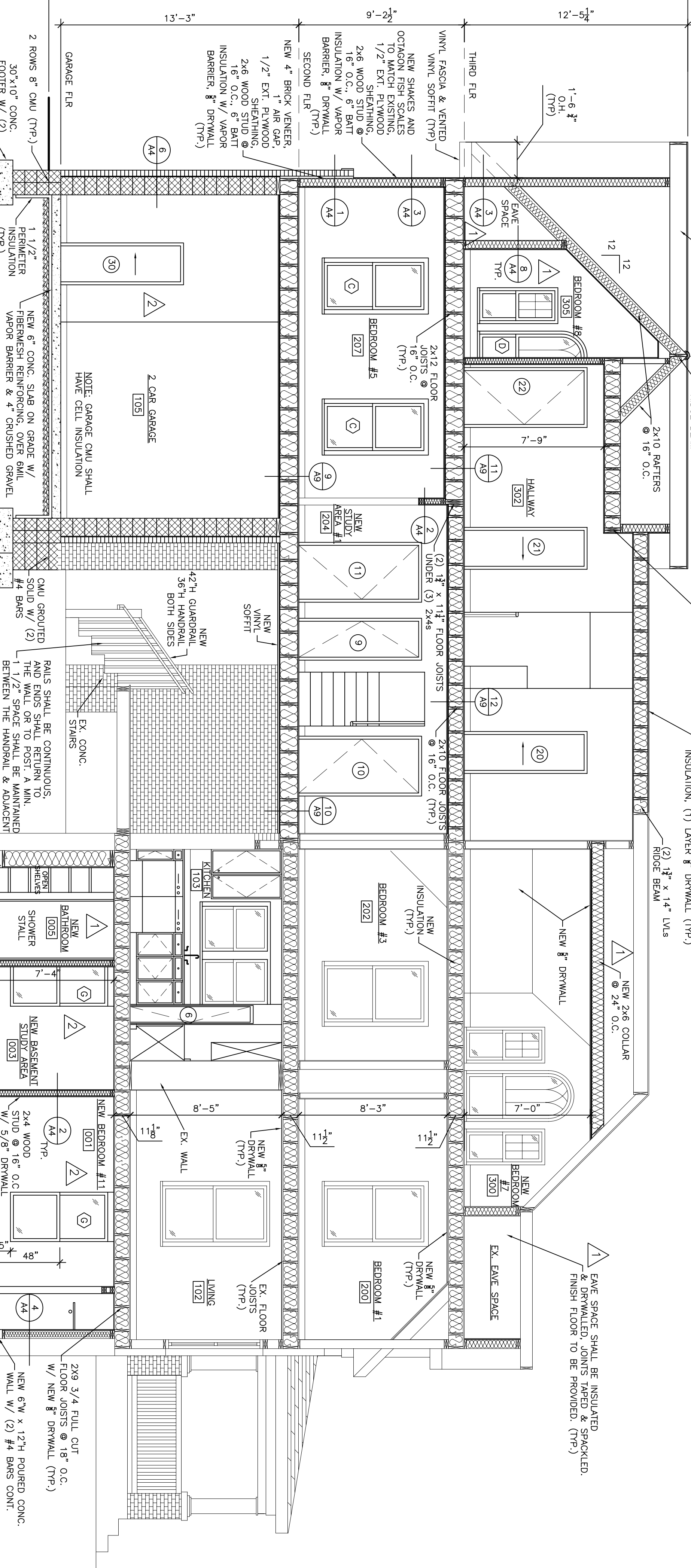
**A** PROPOSED SECTION  
A6 SCALE: 1/4" = 1'-0"



**C** PROPOSED SECTION  
A6 SCALE: 1/4" = 1'-0"



**B** PROPOSED SECTION  
A6 SCALE: 1/4" = 1'-0"



**D** PROPOSED SECTION  
A6 SCALE: 1/4" = 1'-0"

